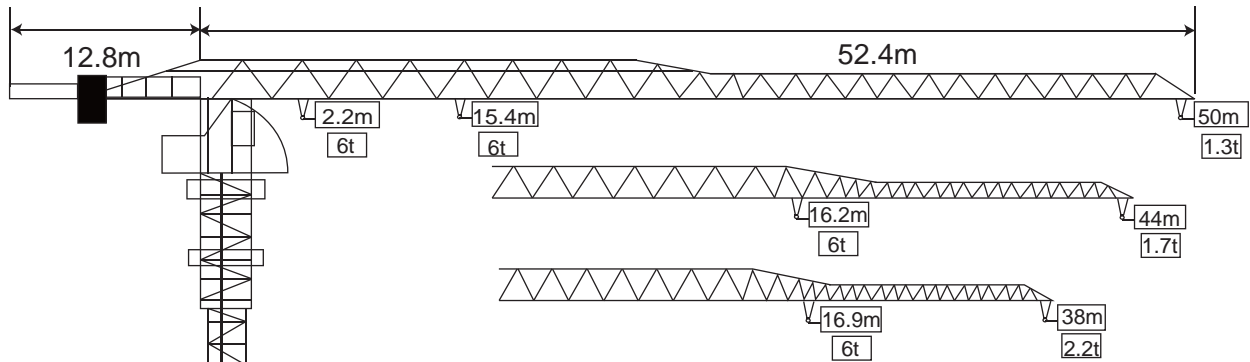
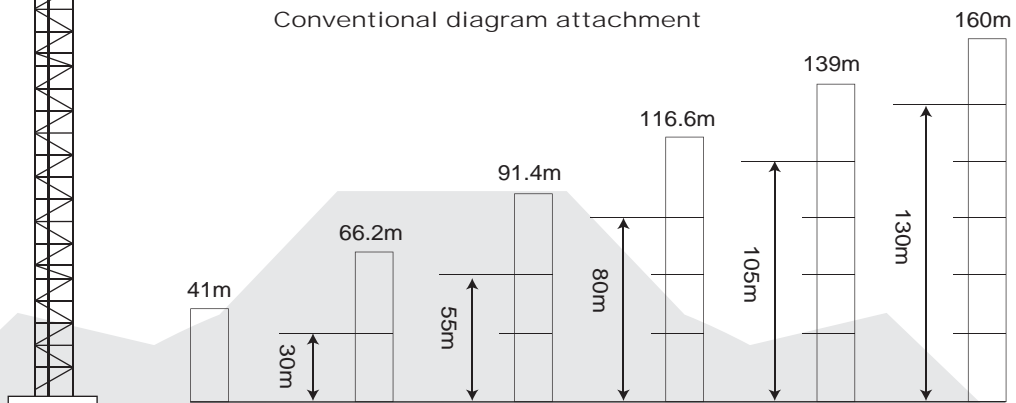


Conventional diagram of amplitude variation



Conventional diagram attachment



Hoisting Mechanism

Max. hoisting speed	80m/min
Max. tractive force	15KN
Reducer ratio	15.69
Motor	
Rated power	24/24/5.4KW
Rated speed	1440/720/180rpm

Slewing Mechanism

Slewing speed	0~0.7rpm
Reducer ratio	157
Motor	
Rated power	4KW×2
Rated speed	1440rpm
Output gear	
Module	10
Number of teeth	16

Main Technical Specification

Rated load moment	600KN·m
Max. working radius	50m
Independent height	41m
Max. height	160m
Max. lifting capacity	6000Kg
Size of mast section	1600×1600×2800mm

Trolleying Mechanism

Max. luffing speed	40m/min
Reducer ratio	49
Motor	
Rated power	3.3/2.2KW
Rated speed	1440/720rpm

Rated Lifting Load Capacity

	m	2.2-15.4	18	20	22	24	26	28	30	32	34	36	38	40	42	44	46	48	50
6t 15.4m	t	6	5.02	4.42	3.94	3.54	3.20	2.91	2.67	2.45	2.26	2.09	1.94	1.81	1.68	1.57	1.47	1.38	1.30
3t 27.4m	t	3	3	3	3	3	3	2.91	2.67	2.45	2.26	2.09	1.94	1.81	1.68	1.57	1.47	1.38	1.30

Climbing Mechanism

Motor	
Rated power	5.5KW
Rated speed	1440rpm

Hydraulic pump	
Hydraulic flow rate	14.4L/min
Hydraulic pressure	25MPa

Climbing hydraulic cylinder	
Diameter	160mm
Stroke	1600mm

	m	2.2-16.2	18	20	22	24	26	28	30	32	34	36	38	40	42	44
6t 16.2m	t	6	5.32	4.70	4.19	3.76	3.41	3.11	2.85	2.62	2.42	2.24	2.08	1.94	1.81	1.70
3t 28.8m	t	3	3	3	3	3	3	3	2.85	2.62	2.42	2.24	2.08	1.94	1.81	1.70

	m	2.2-16.9	18	20	22	24	26	28	30	32	34	36	38
6t 16.9m	t	6	5.57	4.91	4.38	3.95	3.58	3.26	3.00	2.75	2.55	2.36	2.20
3t 30.0m	t	3	3	3	3	3	3	3	3	2.75	2.55	2.36	2.20